

## Monitor your high risk intersection

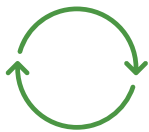
Use big data and infrastructure-based monitoring to take control of your city and roads.

TrafXSAFE Connect allows for consistent monitoring of intersections and roadways by leveraging existing CCTV camera infrastructure. Real-time monitoring and 24/7 video processing and access to results through an online dashboard allows road safety professionals to constantly monitor road safety, measure and compare changes in traffic and safety over time, and receive notifications about specific events of interest.



## BENEFITS

TrafxSAFE Connect provides traffic engineers with a proactive, continuous and effective way to make informed decisions on improving road safety.



### CONTINUOUS & REAL TIME

Video data is continuously processed, and data is uploaded in real-time so that 24/7 results can always be accessed.



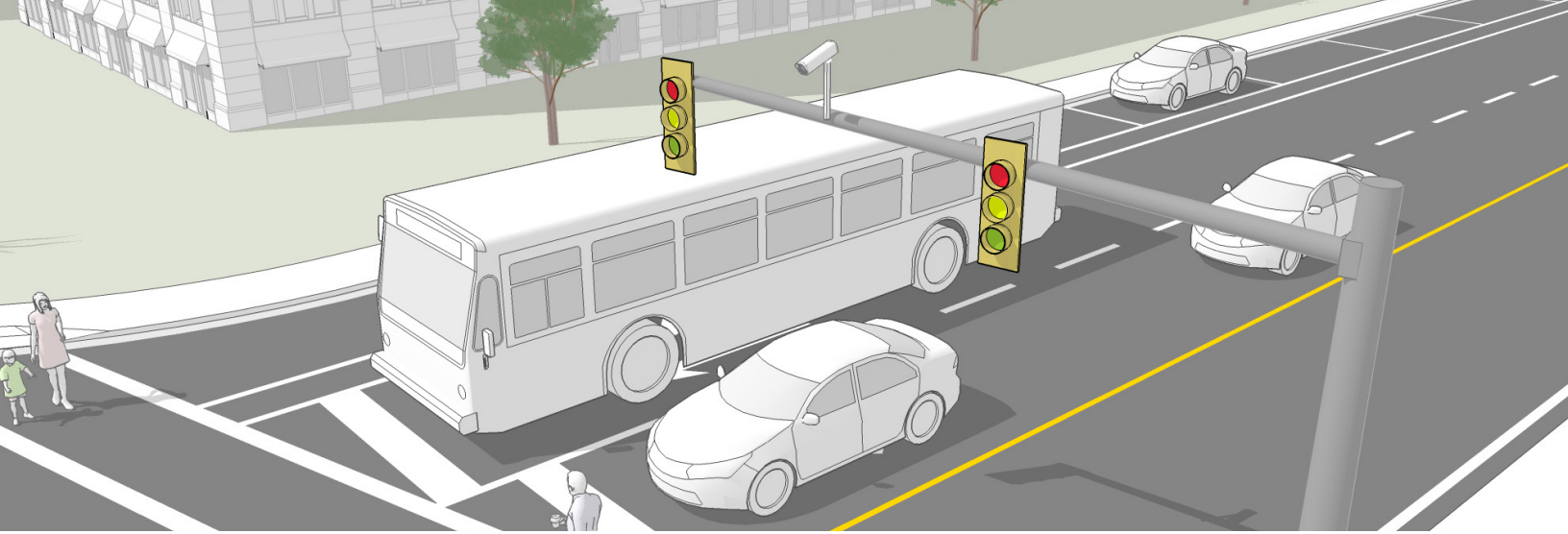
### QUICK & EASY

We take care of the installation and integration to connected cameras.



### INTERACTIVE DASHBOARD

Access results through an easy-to-use, secure cloud-based safety dashboard that allows you to customize and interact with data.

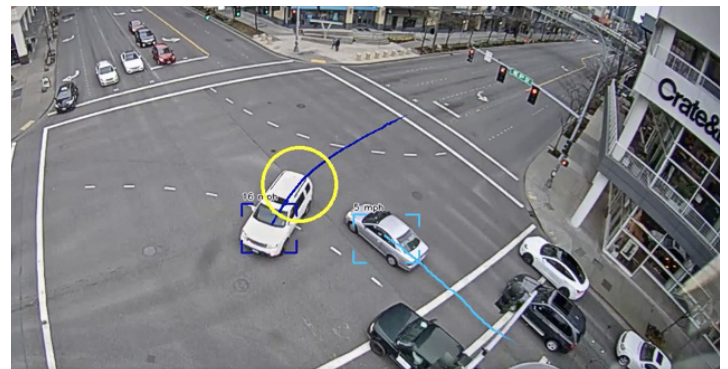


## FEATURES

### Monitor High Risk Locations

Dial in on and consistently monitor high-risk sites for data such as:

- Conflicts
- High speeds
- Traffic density
- Pedestrian crossings



### Observe Road Safety Trends

Evaluate changes in risk exposure at each intersection to observe conflict patterns and better predict trends related to:

- Movements
- Seasonality
- Traffic flow



### Real-Time Custom Event Notifications

Receive customized event notifications based on specific needs including:

- Illegal pedestrian crossings
- Queue buildup
- Critical conflicts





## ABOUT TRANSOFT SOLUTIONS

## HEAD OFFICE – North America

Since 1991, Transoft Solutions, Inc. has been committed to providing innovative software and services for civil and transportation engineering, road safety, and aviation sectors. Headquartered in British Columbia, Canada with 12 global offices, Transoft Solutions is internationally recognized as an industry leader in the development of state-of-the-art products to help users better plan, analyze, and evaluate their intricate design projects. Our products are used every day by thousands of organizations in over 150 countries worldwide. Clients include government agencies at the federal, state, county and municipal levels, as well as major international airports and top engineering and architectural design firms.



### Toll Free

1.888.244.8387 (US & Canada)

### Phone

604.244.8387

### Email

[info@transoftsolutions.com](mailto:info@transoftsolutions.com)

### Website

[www.transoftsolutions.com](http://www.transoftsolutions.com)

© 2021 Transoft Solutions Inc. All rights reserved. All other brand names, product names, or trademarks belong to their respective holders.